

## Normal Distribution (9 pages; 21/2/17)

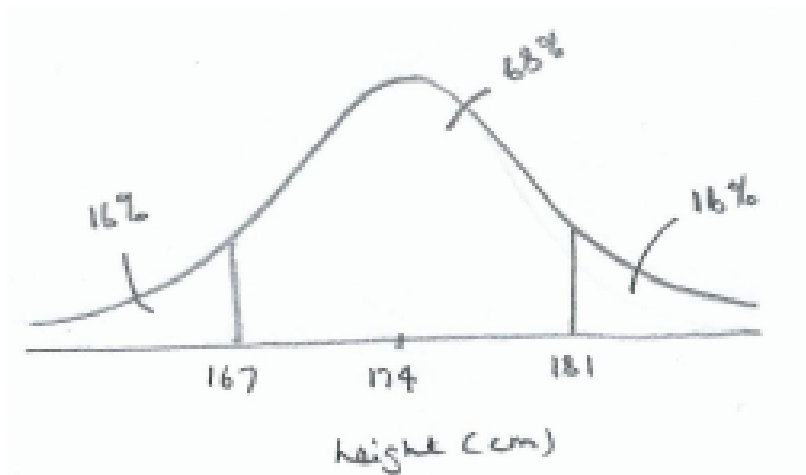
(1) The Normal distribution has a continuous, bell-shaped curve, often associated with naturally-occurring phenomena.

### Example

Let  $X$  be the height (in cm) of an adult male in the UK.

Then, for the sake of argument, we will suppose that

$X \sim N(174, 49)$ , so that  $E(X) = 174$  and  $Var(X) = 49$



(The approximate %s shown will be justified later on.)

(2) If  $X \sim N(\mu, \sigma^2)$ , then the probability density function (pdf) of  $X$

is  $\phi(x) = \frac{1}{\sigma\sqrt{2\pi}} e^{-\frac{1}{2}\left(\frac{x-\mu}{\sigma}\right)^2}$ ;  $-\infty < x < \infty$

Its cumulative distribution function is given by:

$$\Phi(a) = P(X < a) = \int_{-\infty}^a \phi(x) dx$$

## Notes

(i) There is no exact method for carrying out the integration for  $\Phi(a)$ , which has to be determined approximately. (See "Maclaurin Expansions - Exercises")

$$(ii) \int_{-\infty}^{\infty} \phi(x) dx = 1$$

(iii)  $\int_{-\infty}^{\mu} \phi(x) dx = 0.5$ , as the Normal distribution is symmetric about the mean; ie  $E(X)$

(iv) The height of the curve and the thickness of the tails will be determined by the variance.

(v) It can be shown that 1 standard deviation to either side of the mean corresponds to the point of inflexion of the curve (ie the turning point of the gradient). [See "Statistics Exercises"]

(3) It isn't feasible (or necessary) to have tables for combinations of  $\mu$  &  $\sigma^2$ . Instead a transformation can be made to the 'standardised Normal' distribution,  $Z \sim N(0,1)$ , as follows:

### Example

Suppose that the heights,  $X$  (in cm) of adult males in the UK are distributed  $N(174, 49)$ .

To find  $P(X < 178)$ :

$$P(X < 178) = P\left(\frac{X-174}{7} < \frac{178-174}{7}\right) = P(Z < 0.571)$$

Thus,  $Z$  is obtained (from any Normal distribution) by first of all shifting the distribution, so that it is centred on a mean of 0, and then applying a scaling factor, so that the standard deviation becomes 1.

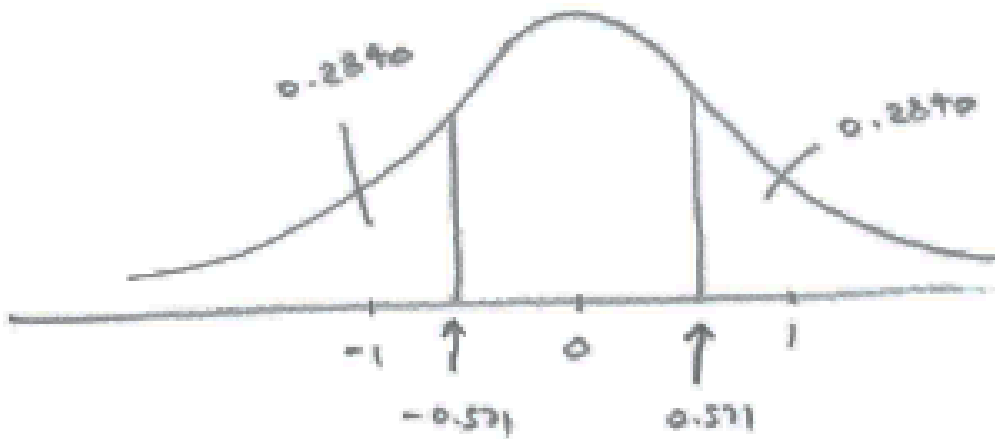
From the Normal tables (see Appendix),

$$P(X < 178) = P(Z < 0.571) = 0.7157 + 0.0003$$

$$= 0.7160 = 0.716 \text{ (3sf)}$$

$$\text{Also, } P(X < 170) = P\left(\frac{X-174}{7} < \frac{170-174}{7}\right) = P(Z < -0.571)$$

$$= 1 - P(Z < 0.571) = 1 - 0.7160 = 0.2840 = 0.284 \text{ (3sf)}$$



(4) Example (cont'd)

$$P(165 < X < 185) = P(X < 185) - P(X < 165)$$

$$P(X < 185) = P\left(\frac{X-174}{7} < \frac{185-174}{7}\right) = P(Z < 1.571)$$

$$= 0.9419$$

$$P(X < 165) = P\left(\frac{X-174}{7} < \frac{165-174}{7}\right) = P(Z < -1.286)$$

$$= 1 - P(Z < 1.286)$$

[by the symmetry of the curve, and the fact that the total area under the curve is 1]

$$= 1 - 0.9008 = 0.0992$$

$$\text{Hence } P(165 < X < 185) = 0.9419 - 0.0992$$

$$= 0.8427 = 0.843 \text{ (3sf)}$$

### (5) Inverse Normal Table

$$\Phi(z) = P(Z < z) = p \text{ (say)}$$

$$\text{so that } z = \Phi^{-1}(p)$$

$$\text{eg } \Phi(1) = P(Z < 1) = 0.8413 \text{ and } \Phi^{-1}(0.841) = 0.9986$$

(unfortunately the table is limited to 3dp for  $p$ ; hence the discrepancy between 0.9986 and 1)

See Appendix for the table for  $\Phi^{-1}(p)$ .

### (6) Useful figures

$$P(Z > 1) = 0.16 \text{ (2sf)}$$

$$P(Z > 2) = 0.023 \text{ (2sf)}$$

$$P(Z > 3) = 0.0013 \text{ (2sf)}$$

$$P(Z > 1.645) = 0.05$$

$$P(Z > 1.96) = 0.025$$

$$P(Z > 2.326) = 0.01$$

$$P(Z > 2.576) = 0.005$$

**Note:** As  $P(Z > 1) = 0.16$ ; ie approximately 16% of the area under the standardised Normal curve lies to the right of 1, which

is one standard deviation for  $N(0, 1)$ , it follows that 16% of the area for any Normal distribution,  $N(\mu, \sigma^2)$  lies to the right of one standard deviation; ie  $\sigma$  (as shown in (1)).

[A potential source of confusion here is the fact that 1 is the size of one standard deviation for  $N(0, 1)$ . Thus, for example,  $P(Z > 1.645) = 0.05$  could be written as

$$P(Z > 0 + (1.645)(1)) = 0.05$$

and  $P(X > \mu + 1.645\sigma) = 0.05$ , where  $X \sim N(\mu, \sigma^2)$ .]

(7) Example

If  $P(X < 90) = 0.4$  and  $P(X > 120) = 0.2$ , find  $\mu$  and  $\sigma$ , given that  $X \sim N(\mu, \sigma^2)$

**Solution**

$$P(X < 90) = P\left(\frac{X-\mu}{\sigma} < \frac{90-\mu}{\sigma}\right)$$

So  $P\left(Z < \frac{90-\mu}{\sigma}\right) = 0.4$  ; ie left-hand tail of 40%

$$\Rightarrow P\left(Z < -\left(\frac{90-\mu}{\sigma}\right)\right) = 0.6$$

[where we expect  $-\left(\frac{90-\mu}{\sigma}\right)$  to be positive]

$$\Rightarrow \frac{-(90-\mu)}{\sigma} = \Phi^{-1}(0.6) = 0.2533 \quad (1)$$

$$P(X > 120) = P\left(\frac{X-\mu}{\sigma} > \frac{120-\mu}{\sigma}\right)$$

So  $P\left(Z > \frac{120-\mu}{\sigma}\right) = 0.2$  ; ie right-hand tail of 20%

$$\Rightarrow P\left(Z < \frac{120-\mu}{\sigma}\right) = 0.8$$

$$\Rightarrow \frac{120-\mu}{\sigma} = \Phi^{-1}(0.8) = 0.8416 \quad (2)$$

$$\text{and } \frac{-(90-\mu)}{\sigma} = 0.2533 \quad (1)$$

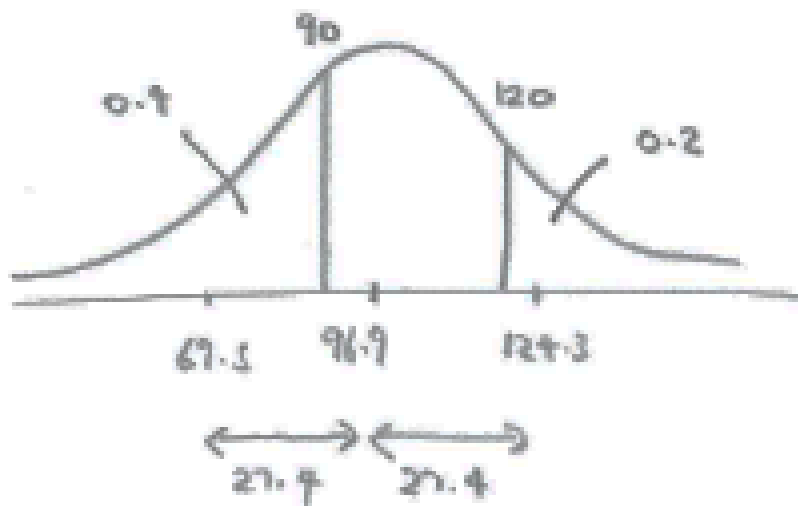
$$\text{Solving (1) \& (2)} \Rightarrow \frac{120-\mu}{\mu-90} = \frac{0.8416}{0.2533} = 3.3225$$

$$\Rightarrow 120 - \mu = 3.3225\mu - 299.025$$

$$\Rightarrow \mu = \frac{120+299.025}{3.3225+1} = 96.940 = 96.9 \text{ (3sf)}$$

$$(1) \Rightarrow \sigma = \frac{96.940-90}{0.2533} = 27.398 = 27.4 \text{ (3sf)}$$

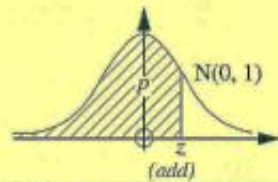
A reasonableness check can be made, by marking in one standard deviation either side of the mean (at the point of inflexion). Also, we know that roughly 16% of the area lies to the right of the 1 standard deviation point.



# Appendix: Normal tables

The Normal distribution: values of  $\Phi(z) = p$

The table gives the probability,  $p$ , of a random variable distributed as  $N(0, 1)$  being less than  $z$ .



$z$	.00	.01	.02	.03	.04	.05	.06	.07	.08	.09	1	2	3	4	5	6	7	8	9
0.0	.5000	.5040	.5080	.5120	.5160	.5199	.5239	.5279	.5319	.5359	4	8	12	16	20	24	28	32	36
0.1	.5398	.5438	.5478	.5517	.5557	.5596	.5636	.5675	.5714	.5753	4	8	12	16	20	24	28	32	35
0.2	.5793	.5832	.5871	.5910	.5948	.5987	.6026	.6064	.6103	.6141	4	8	12	15	19	23	27	31	35
0.3	.6179	.6217	.6255	.6293	.6331	.6368	.6406	.6443	.6480	.6517	4	8	11	15	19	23	26	30	34
0.4	.6554	.6591	.6628	.6664	.6700	.6736	.6772	.6808	.6844	.6879	4	7	11	14	18	22	25	29	32
0.5	.6915	.6950	.6985	.7019	.7054	.7088	.7123	.7157	.7190	.7224	3	7	10	14	17	21	24	27	31
0.6	.7257	.7291	.7324	.7357	.7389	.7422	.7454	.7486	.7517	.7549	3	6	10	13	16	19	23	26	29
0.7	.7580	.7611	.7642	.7673	.7704	.7734	.7764	.7794	.7823	.7852	3	6	9	12	15	18	21	24	27
0.8	.7881	.7910	.7939	.7967	.7995	.8023	.8051	.8078	.8106	.8133	3	6	8	11	14	17	19	22	25
0.9	.8159	.8186	.8212	.8238	.8264	.8289	.8315	.8340	.8365	.8389	3	5	8	10	13	15	18	20	23
1.0	.8413	.8438	.8461	.8485	.8508	.8531	.8554	.8577	.8599	.8621	2	5	7	9	12	14	16	18	21
1.1	.8643	.8665	.8686	.8708	.8729	.8749	.8770	.8790	.8810	.8830	2	4	6	8	10	12	14	16	19
1.2	.8849	.8869	.8888	.8907	.8925	.8944	.8962	.8980	.8997	.9015	2	4	6	7	9	11	13	15	16
1.3	.9032	.9049	.9066	.9082	.9099	.9115	.9131	.9147	.9162	.9177	2	3	5	6	8	10	11	13	14
1.4	.9192	.9207	.9222	.9236	.9251	.9265	.9279	.9292	.9306	.9319	1	3	4	6	7	8	10	11	13
1.5	.9332	.9345	.9357	.9370	.9382	.9394	.9406	.9418	.9429	.9441	1	2	4	5	6	7	8	10	11
1.6	.9452	.9463	.9474	.9484	.9495	.9505	.9515	.9525	.9535	.9545	1	2	3	4	5	6	7	8	9
1.7	.9554	.9564	.9573	.9582	.9591	.9599	.9608	.9616	.9625	.9633	1	2	3	3	4	5	6	7	8
1.8	.9641	.9649	.9656	.9664	.9671	.9678	.9686	.9693	.9699	.9706	1	1	2	3	4	4	5	6	6
1.9	.9713	.9719	.9726	.9732	.9738	.9744	.9750	.9756	.9761	.9767	1	1	2	2	3	4	4	5	5
2.0	.9772	.9778	.9783	.9788	.9793	.9798	.9803	.9808	.9812	.9817	0	1	1	2	2	3	3	4	4
2.1	.9821	.9826	.9830	.9834	.9838	.9842	.9846	.9850	.9854	.9857	0	1	1	2	2	3	3	4	4
2.2	.9861	.9864	.9868	.9871	.9875	.9878	.9881	.9884	.9887	.9890	0	1	1	1	2	2	3	3	3
2.3	.9893	.9896	.9898	.9901	.9904	.9906	.9909	.9911	.9913	.9916	0	1	1	1	1	2	2	2	2
2.4	.9918	.9920	.9922	.9925	.9927	.9929	.9931	.9932	.9934	.9936	0	0	1	1	1	1	1	2	2
2.5	.9938	.9940	.9941	.9943	.9945	.9946	.9948	.9949	.9951	.9952	differences untrustworthy								
2.6	.9953	.9955	.9956	.9957	.9959	.9960	.9961	.9962	.9963	.9964									
2.7	.9965	.9966	.9967	.9968	.9969	.9970	.9971	.9972	.9973	.9974									
2.8	.9974	.9975	.9976	.9977	.9977	.9978	.9979	.9979	.9980	.9981									
2.9	.9981	.9982	.9982	.9983	.9984	.9984	.9985	.9985	.9986	.9986									
3.0	.9987	.9987	.9987	.9988	.9988	.9989	.9989	.9989	.9990	.9990									
3.1	.9990	.9991	.9991	.9991	.9992	.9992	.9992	.9992	.9993	.9993									
3.2	.9993	.9993	.9994	.9994	.9994	.9994	.9994	.9995	.9995	.9995									
3.3	.9995	.9995	.9996	.9996	.9996	.9996	.9996	.9996	.9996	.9997									
3.4	.9997	.9997	.9997	.9997	.9997	.9997	.9997	.9997	.9997	.9998									

The Inverse Normal function: values of  $\Phi^{-1}(p) = z$

$p$	.000	.001	.002	.003	.004	.005	.006	.007	.008	.009
.50	.0000	.0025	.0050	.0075	.0100	.0125	.0150	.0175	.0201	.0226
.51	.0251	.0276	.0301	.0326	.0351	.0376	.0401	.0426	.0451	.0476
.52	.0502	.0527	.0552	.0577	.0602	.0627	.0652	.0677	.0702	.0728
.53	.0753	.0778	.0803	.0828	.0853	.0878	.0904	.0929	.0954	.0979
.54	.1004	.1030	.1055	.1080	.1105	.1130	.1156	.1181	.1206	.1231
.55	.1257	.1282	.1307	.1332	.1358	.1383	.1408	.1434	.1459	.1484
.56	.1510	.1535	.1560	.1586	.1611	.1637	.1662	.1687	.1713	.1738
.57	.1764	.1789	.1815	.1840	.1866	.1891	.1917	.1942	.1968	.1993
.58	.2019	.2045	.2070	.2096	.2121	.2147	.2173	.2198	.2224	.2250
.59	.2275	.2301	.2327	.2353	.2378	.2404	.2430	.2456	.2482	.2508
.60	.2533	.2559	.2585	.2611	.2637	.2663	.2689	.2715	.2741	.2767
.61	.2793	.2819	.2845	.2871	.2897	.2924	.2950	.2976	.3002	.3029
.62	.3055	.3081	.3107	.3134	.3160	.3186	.3213	.3239	.3266	.3292
.63	.3319	.3345	.3372	.3398	.3425	.3451	.3478	.3505	.3531	.3558
.64	.3585	.3611	.3638	.3665	.3692	.3719	.3745	.3772	.3799	.3826
.65	.3853	.3880	.3907	.3934	.3961	.3989	.4016	.4043	.4070	.4097
.66	.4125	.4152	.4179	.4207	.4234	.4261	.4289	.4316	.4344	.4372
.67	.4399	.4427	.4454	.4482	.4510	.4538	.4566	.4593	.4621	.4649
.68	.4677	.4705	.4733	.4761	.4789	.4817	.4845	.4874	.4902	.4930
.69	.4959	.4987	.5015	.5044	.5072	.5101	.5129	.5158	.5187	.5215
.70	.5244	.5273	.5302	.5330	.5359	.5388	.5417	.5446	.5476	.5505
.71	.5534	.5563	.5592	.5622	.5651	.5681	.5710	.5740	.5769	.5799
.72	.5828	.5858	.5888	.5918	.5948	.5978	.6008	.6038	.6068	.6098
.73	.6128	.6158	.6189	.6219	.6250	.6280	.6311	.6341	.6372	.6403
.74	.6433	.6464	.6495	.6526	.6557	.6588	.6620	.6651	.6682	.6713
.75	.6745	.6776	.6808	.6840	.6871	.6903	.6935	.6967	.6999	.7031
.76	.7063	.7095	.7128	.7160	.7192	.7225	.7257	.7290	.7323	.7356
.77	.7388	.7421	.7454	.7488	.7521	.7554	.7588	.7621	.7655	.7688
.78	.7722	.7756	.7790	.7824	.7858	.7892	.7926	.7961	.7995	.8030
.79	.8064	.8099	.8134	.8169	.8204	.8239	.8274	.8310	.8345	.8381
.80	.8416	.8452	.8488	.8524	.8560	.8596	.8633	.8669	.8705	.8742
.81	.8779	.8816	.8853	.8890	.8927	.8965	.9002	.9040	.9078	.9116
.82	.9154	.9192	.9230	.9269	.9307	.9346	.9385	.9424	.9463	.9502
.83	.9542	.9581	.9621	.9661	.9701	.9741	.9782	.9822	.9863	.9904
.84	.9945	.9986	1.003	1.007	1.011	1.015	1.019	1.024	1.028	1.032
.85	1.036	1.041	1.045	1.049	1.054	1.058	1.063	1.067	1.071	1.076
.86	1.080	1.085	1.089	1.094	1.099	1.103	1.108	1.112	1.117	1.122
.87	1.126	1.131	1.136	1.141	1.146	1.150	1.155	1.160	1.165	1.170
.88	1.175	1.180	1.185	1.190	1.195	1.200	1.206	1.211	1.216	1.221
.89	1.227	1.232	1.237	1.243	1.248	1.254	1.259	1.265	1.270	1.276
.90	1.282	1.287	1.293	1.299	1.305	1.311	1.317	1.323	1.329	1.335
.91	1.341	1.347	1.353	1.360	1.366	1.372	1.379	1.385	1.392	1.398
.92	1.405	1.412	1.419	1.426	1.433	1.440	1.447	1.454	1.461	1.468
.93	1.476	1.483	1.491	1.499	1.506	1.514	1.522	1.530	1.538	1.546
.94	1.555	1.563	1.572	1.581	1.589	1.598	1.607	1.616	1.626	1.635
.95	1.645	1.655	1.665	1.675	1.685	1.695	1.706	1.717	1.728	1.739
.96	1.751	1.762	1.774	1.787	1.799	1.812	1.825	1.838	1.852	1.866
.97	1.881	1.896	1.911	1.927	1.943	1.960	1.977	1.995	2.014	2.034
.98	2.054	2.075	2.097	2.120	2.144	2.170	2.197	2.226	2.257	2.290
.99	2.326	2.366	2.409	2.457	2.512	2.576	2.652	2.748	2.878	3.090

(see below for magnified version of LHS)



											<i>(add)</i>								
<i>z</i>	.00	.01	.02	.03	.04	.05	.06	.07	.08	.09	1	2	3	4	5	6	7	8	9
0.0	.5000	.5040	.5080	.5120	.5160	.5199	.5239	.5279	.5319	.5359	4	8	12	16	20	24	28	32	36
0.1	.5398	.5438	.5478	.5517	.5557	.5596	.5636	.5675	.5714	.5753	4	8	12	16	20	24	28	32	35
0.2	.5793	.5832	.5871	.5910	.5948	.5987	.6026	.6064	.6103	.6141	4	8	12	15	19	23	27	31	35
0.3	.6179	.6217	.6255	.6293	.6331	.6368	.6406	.6443	.6480	.6517	4	8	11	15	19	23	26	30	34
0.4	.6554	.6591	.6628	.6664	.6700	.6736	.6772	.6808	.6844	.6879	4	7	11	14	18	22	25	29	32
0.5	.6915	.6950	.6985	.7019	.7054	.7088	.7123	.7157	.7190	.7224	3	7	10	14	17	21	24	27	31
0.6	.7257	.7291	.7324	.7357	.7389	.7422	.7454	.7486	.7517	.7549	3	6	10	13	16	19	23	26	29
0.7	.7580	.7611	.7642	.7673	.7704	.7734	.7764	.7794	.7823	.7852	3	6	9	12	15	18	21	24	27
0.8	.7881	.7910	.7939	.7967	.7995	.8023	.8051	.8078	.8106	.8133	3	6	8	11	14	17	19	22	25
0.9	.8159	.8186	.8212	.8238	.8264	.8289	.8315	.8340	.8365	.8389	3	5	8	10	13	15	18	20	23
1.0	.8413	.8438	.8461	.8485	.8508	.8531	.8554	.8577	.8599	.8621	2	5	7	9	12	14	16	18	21
1.1	.8643	.8665	.8686	.8708	.8729	.8749	.8770	.8790	.8810	.8830	2	4	6	8	10	12	14	16	19
1.2	.8849	.8869	.8888	.8907	.8925	.8944	.8962	.8980	.8997	.9015	2	4	6	7	9	11	13	15	16
1.3	.9032	.9049	.9066	.9082	.9099	.9115	.9131	.9147	.9162	.9177	2	3	5	6	8	10	11	13	14
1.4	.9192	.9207	.9222	.9236	.9251	.9265	.9279	.9292	.9306	.9319	1	3	4	6	7	8	10	11	13
1.5	.9332	.9345	.9357	.9370	.9382	.9394	.9406	.9418	.9429	.9441	1	2	4	5	6	7	8	10	11
1.6	.9452	.9463	.9474	.9484	.9495	.9505	.9515	.9525	.9535	.9545	1	2	3	4	5	6	7	8	9
1.7	.9554	.9564	.9573	.9582	.9591	.9599	.9608	.9616	.9625	.9633	1	2	3	3	4	5	6	7	8
1.8	.9641	.9649	.9656	.9664	.9671	.9678	.9686	.9693	.9699	.9706	1	1	2	3	4	4	5	6	6
1.9	.9713	.9719	.9726	.9732	.9738	.9744	.9750	.9756	.9761	.9767	1	1	2	2	3	4	4	5	5
2.0	.9772	.9778	.9783	.9788	.9793	.9798	.9803	.9808	.9812	.9817	0	1	1	2	2	3	3	4	4
2.1	.9821	.9826	.9830	.9834	.9838	.9842	.9846	.9850	.9854	.9857	0	1	1	2	2	2	3	3	4
2.2	.9861	.9864	.9868	.9871	.9875	.9878	.9881	.9884	.9887	.9890	0	1	1	1	2	2	2	3	3
2.3	.9893	.9896	.9898	.9901	.9904	.9906	.9909	.9911	.9913	.9916	0	1	1	1	1	2	2	2	2
2.4	.9918	.9920	.9922	.9925	.9927	.9929	.9931	.9932	.9934	.9936	0	0	1	1	1	1	1	2	2



**The Inverse Normal function: values of  $\Phi^{-1}(p) = z$**

$p$	.000	.001	.002	.003	.004	.005	.006	.007	.008	.009
.50	.0000	.0025	.0050	.0075	.0100	.0125	.0150	.0175	.0201	.0226
.51	.0251	.0276	.0301	.0326	.0351	.0376	.0401	.0426	.0451	.0476
.52	.0502	.0527	.0552	.0577	.0602	.0627	.0652	.0677	.0702	.0728
.53	.0753	.0778	.0803	.0828	.0853	.0878	.0904	.0929	.0954	.0979
.54	.1004	.1030	.1055	.1080	.1105	.1130	.1156	.1181	.1206	.1231
.55	.1257	.1282	.1307	.1332	.1358	.1383	.1408	.1434	.1459	.1484
.56	.1510	.1535	.1560	.1586	.1611	.1637	.1662	.1687	.1713	.1738
.57	.1764	.1789	.1815	.1840	.1866	.1891	.1917	.1942	.1968	.1993
.58	.2019	.2045	.2070	.2096	.2121	.2147	.2173	.2198	.2224	.2250
.59	.2275	.2301	.2327	.2353	.2378	.2404	.2430	.2456	.2482	.2508

.60	.2533	.2559	.2585	.2611	.2637	.2663	.2689	.2715	.2741	.2767
.61	.2793	.2819	.2845	.2871	.2898	.2924	.2950	.2976	.3002	.3029
.62	.3055	.3081	.3107	.3134	.3160	.3186	.3213	.3239	.3266	.3292
.63	.3319	.3345	.3372	.3398	.3425	.3451	.3478	.3505	.3531	.3558
.64	.3585	.3611	.3638	.3665	.3692	.3719	.3745	.3772	.3799	.3826
.65	.3853	.3880	.3907	.3934	.3961	.3989	.4016	.4043	.4070	.4097
.66	.4125	.4152	.4179	.4207	.4234	.4261	.4289	.4316	.4344	.4372
.67	.4399	.4427	.4454	.4482	.4510	.4538	.4565	.4593	.4621	.4649
.68	.4677	.4705	.4733	.4761	.4789	.4817	.4845	.4874	.4902	.4930
.69	.4959	.4987	.5015	.5044	.5072	.5101	.5129	.5158	.5187	.5215
.70	.5244	.5273	.5302	.5330	.5359	.5388	.5417	.5446	.5476	.5505
.71	.5534	.5563	.5592	.5622	.5651	.5681	.5710	.5740	.5769	.5799
.72	.5828	.5858	.5888	.5918	.5948	.5978	.6008	.6038	.6068	.6098
.73	.6128	.6158	.6189	.6219	.6250	.6280	.6311	.6341	.6372	.6403
.74	.6433	.6464	.6495	.6526	.6557	.6588	.6620	.6651	.6682	.6713
.75	.6745	.6776	.6808	.6840	.6871	.6903	.6935	.6967	.6999	.7031
.76	.7063	.7095	.7128	.7160	.7192	.7225	.7257	.7290	.7323	.7356
.77	.7388	.7421	.7454	.7488	.7521	.7554	.7588	.7621	.7655	.7688
.78	.7722	.7756	.7790	.7824	.7858	.7892	.7926	.7961	.7995	.8030
.79	.8064	.8099	.8134	.8169	.8204	.8239	.8274	.8310	.8345	.8381

.80	.8416	.8452	.8488	.8524	.8560	.8596	.8633	.8669	.8705	.8742
.81	.8779	.8816	.8853	.8890	.8927	.8965	.9002	.9040	.9078	.9116
.82	.9154	.9192	.9230	.9269	.9307	.9346	.9385	.9424	.9463	.9502
.83	.9542	.9581	.9621	.9661	.9701	.9741	.9782	.9822	.9863	.9904
.84	.9945	.9986	1.003	1.007	1.011	1.015	1.019	1.024	1.028	1.032
.85	1.036	1.041	1.045	1.049	1.054	1.058	1.063	1.067	1.071	1.076
.86	1.080	1.085	1.089	1.094	1.099	1.103	1.108	1.112	1.117	1.122
.87	1.126	1.131	1.136	1.141	1.146	1.150	1.155	1.160	1.165	1.170
.88	1.175	1.180	1.185	1.190	1.195	1.200	1.206	1.211	1.216	1.221
.89	1.227	1.232	1.237	1.243	1.248	1.254	1.259	1.265	1.270	1.276
.90	1.282	1.287	1.293	1.299	1.305	1.311	1.317	1.323	1.329	1.335
.91	1.341	1.347	1.353	1.360	1.366	1.372	1.379	1.385	1.392	1.398
.92	1.405	1.412	1.419	1.426	1.433	1.440	1.447	1.454	1.461	1.468
.93	1.476	1.483	1.491	1.499	1.506	1.514	1.522	1.530	1.538	1.546
.94	1.555	1.563	1.572	1.581	1.589	1.598	1.607	1.616	1.626	1.635
.95	1.645	1.655	1.665	1.675	1.685	1.695	1.706	1.717	1.728	1.739
.96	1.751	1.762	1.774	1.787	1.799	1.812	1.825	1.838	1.852	1.866
.97	1.881	1.896	1.911	1.927	1.943	1.960	1.977	1.995	2.014	2.034
.98	2.054	2.075	2.097	2.120	2.144	2.170	2.197	2.226	2.257	2.290
.99	2.326	2.366	2.409	2.457	2.512	2.576	2.652	2.748	2.878	3.090